

AATi Recommended Installation Guidelines for fixing into concrete/stone

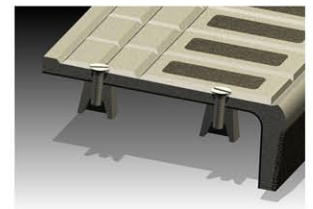
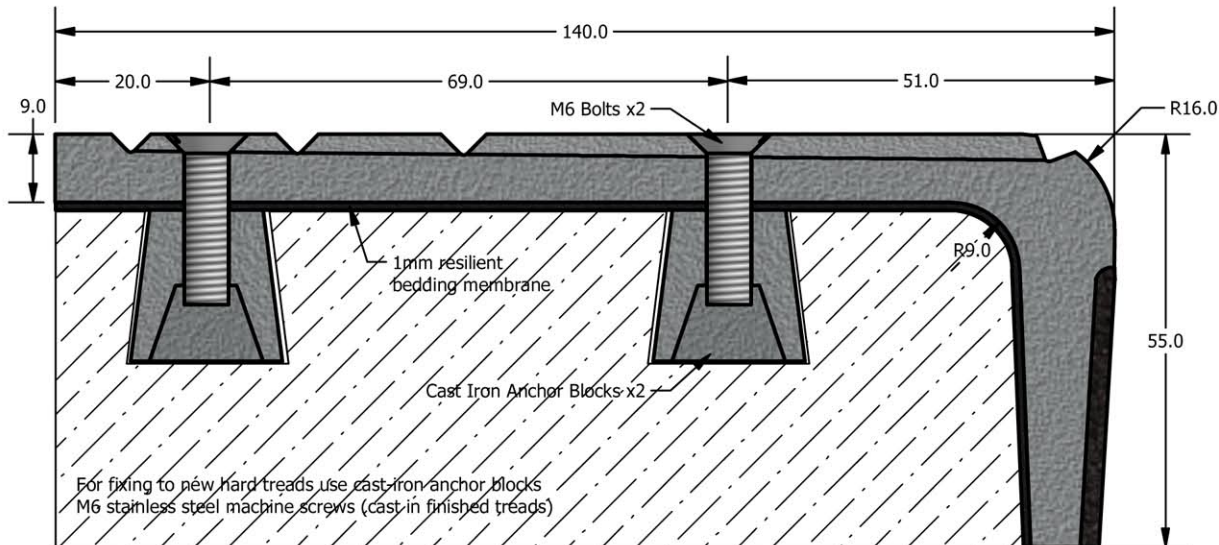


Fig 3.

Method 1 - Cast In

1. Insert M6 x 20mm stainless steel countersunk screw through nosing and into AATi cast iron anchor block
2. Position AATi nosing into mould unit, lay bedding membrane against nosing internal face, and protect as necessary to stop slurry getting on to visible surfaces of nosing
3. Mix & pour in concrete (as dry as possible to aid the above)
4. Leave to set
5. Remove from mould as soon as possible & clean as necessary

Fig 1. 140mm "Sightline" stair nosing and fixing



Scale: 1:1

Method 2 - Retrofit

1. Ensure surface is sound and level
2. Make good any worn or damaged areas with rapid cement or epoxy repair mortar
3. Position AATi nosing onto step in correct position
4. Spot through holes using 7mm masonry drill bit
5. Lift off nosing and drill spotted positions with 13mm Masonry drill bit to a depth of between 45-50mm
6. Clean out dust/dirt from hole
7. Insert Rawlnut Type 6350 up to its flange
8. Position bedding membrane against the stair face, and position nosing on top. OR apply a layer of bedding compound (i.e. exterior grade tile adhesive), spreading the adhesive to cover the internal face of the nosing, using, i.e. a tile grout spreader. Place nosing back into position on step and ensure it is solidly bedded.
9. Fix by inserting appropriate length (50mm) M6 stainless steel countersunk screw and tighten to compress sleeve and form a secure fixing.

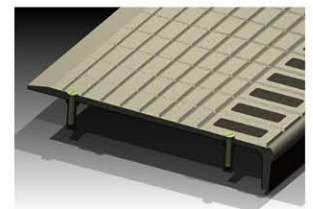
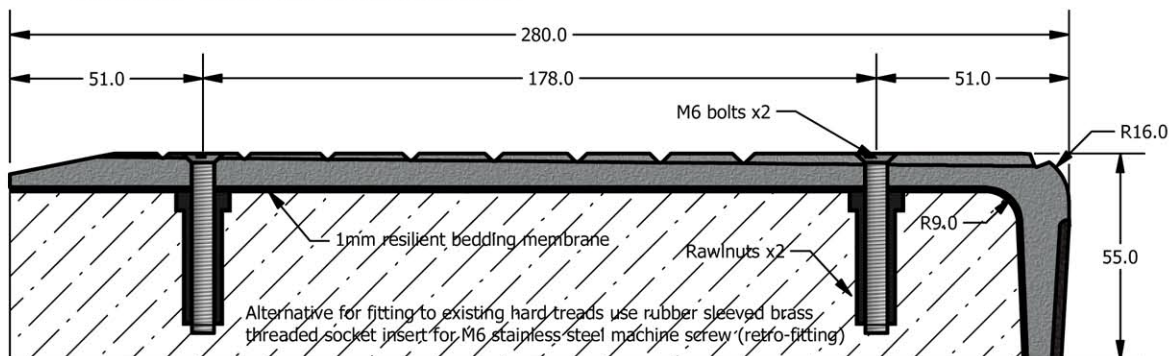


Fig 4.

Fig 2. 280mm "Sightline" stair nosing insert and fixings



Scale 1:2

All dimensions in mm,
All unmarked radii - 0.5mm

AATi Recommended Installation Guidelines for retrofitting SN293/WL/57 aluminium nosings to concrete



Method 1 - Retrofit

1. Ensure surface is sound and level
2. Make good any worn or damaged areas with rapid cement or epoxy repair mortar
3. Position AATi nosing onto step in correct position
4. Spot through holes using 7mm masonry drill bit
5. Lift off nosing and drill spotted positions with 7mm Masonry drill bit to a depth of between 50-55mm
6. Clean out dust/dirt from hole
7. Insert Brown Rawplug.
8. Apply a layer of appropriate bedding compound (not cement based) to cover the internal face of the nosing.
9. Place nosing back into position on step and ensure it is solidly bedded.
10. Fix by inserting appropriate length (2 inch) countersunk pozi wood screw and tighten to form a secure fixing.

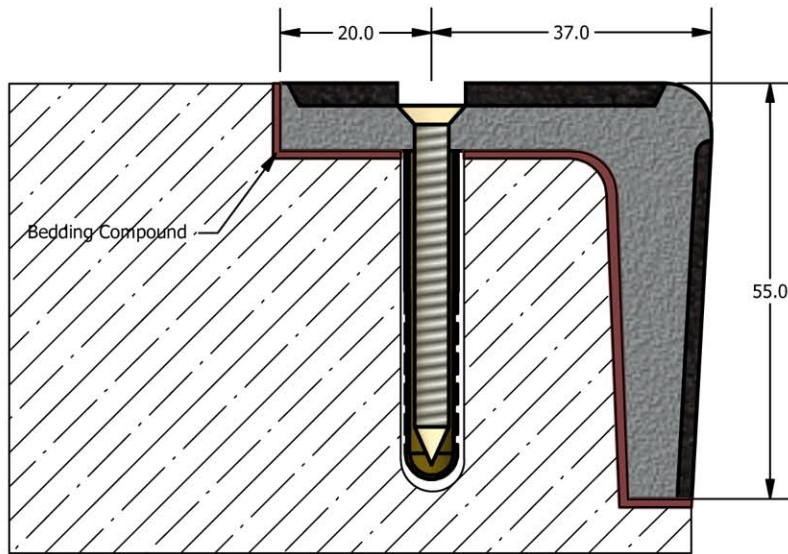


Fig 1. SN293/WL/57 stair nosing with fittings

Scale 1:1



Fig 2. SN293/WL/57 stair nosing with fittings

All dimensions in mm,
All unmarked radii - 0.5mm